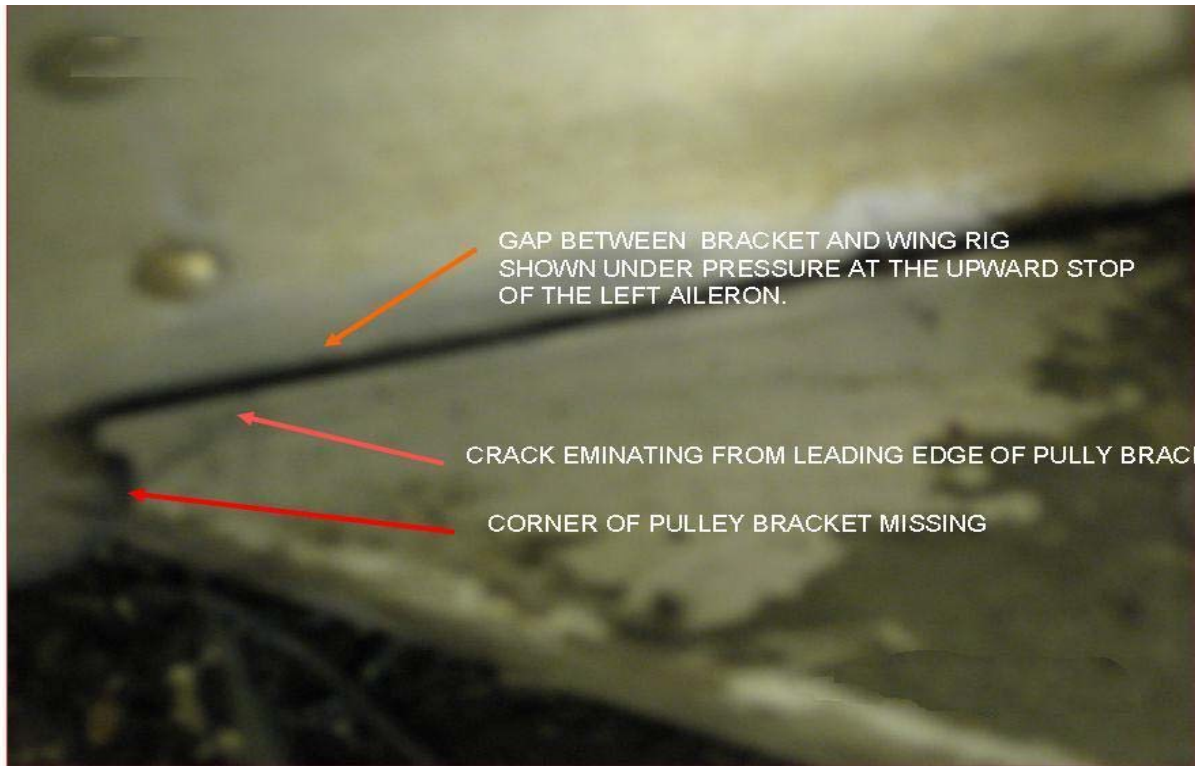


## Piper PA28R200, Cracked Aileron Pulley Brackets, ATA 2710

A General Aviation submission states, "During an Annual Inspection, both the L/H and R/H lower support aileron pulley brackets were *(found)* cracked in the forward inboard radius mount *(flange)* at each wing rib. A piece of one of these pulley brackets was detached." *(Pulley bracket P/N: 67550000.)*



VIEW LOOKING INBD AT L/H WING LOWER AILERON PULLEY BRACKET ATTACHED TO THE L/H MAIN WING RIB.  
\* (NOTICE A PIECE OF THE BRACKET MISSING WITH GAP AT WING RIB). THE SEVERITY OF THE DEFECT WAS ACHIEVED BY ADDING UPWARD PRESSURE TO THE TRAVEL STOP WITH THE TRAILING EDGE OF AIRLERON.

**Piper PA28R200, Cracked Aileron Pulley Brackets, ATA 2710**



**"VIEW LOOKING DOWN ON RIGHT HAND WING FORWARD CORNER OF LOWER PULLEY BRACKET"**  
**NOTE\*- THE CRACK WAS MORE EVIDENT WITH UPWARD PRESSURE ADDED TO THE TRAILING**  
**EDGE OF THE AIRLERON.**



**Piper PA28R200, Cracked Aileron Pulley Brackets, ATA 2710**



Part Total Time (unknown)